

# Starter Plastic Paw Pal® Pet Waste Station

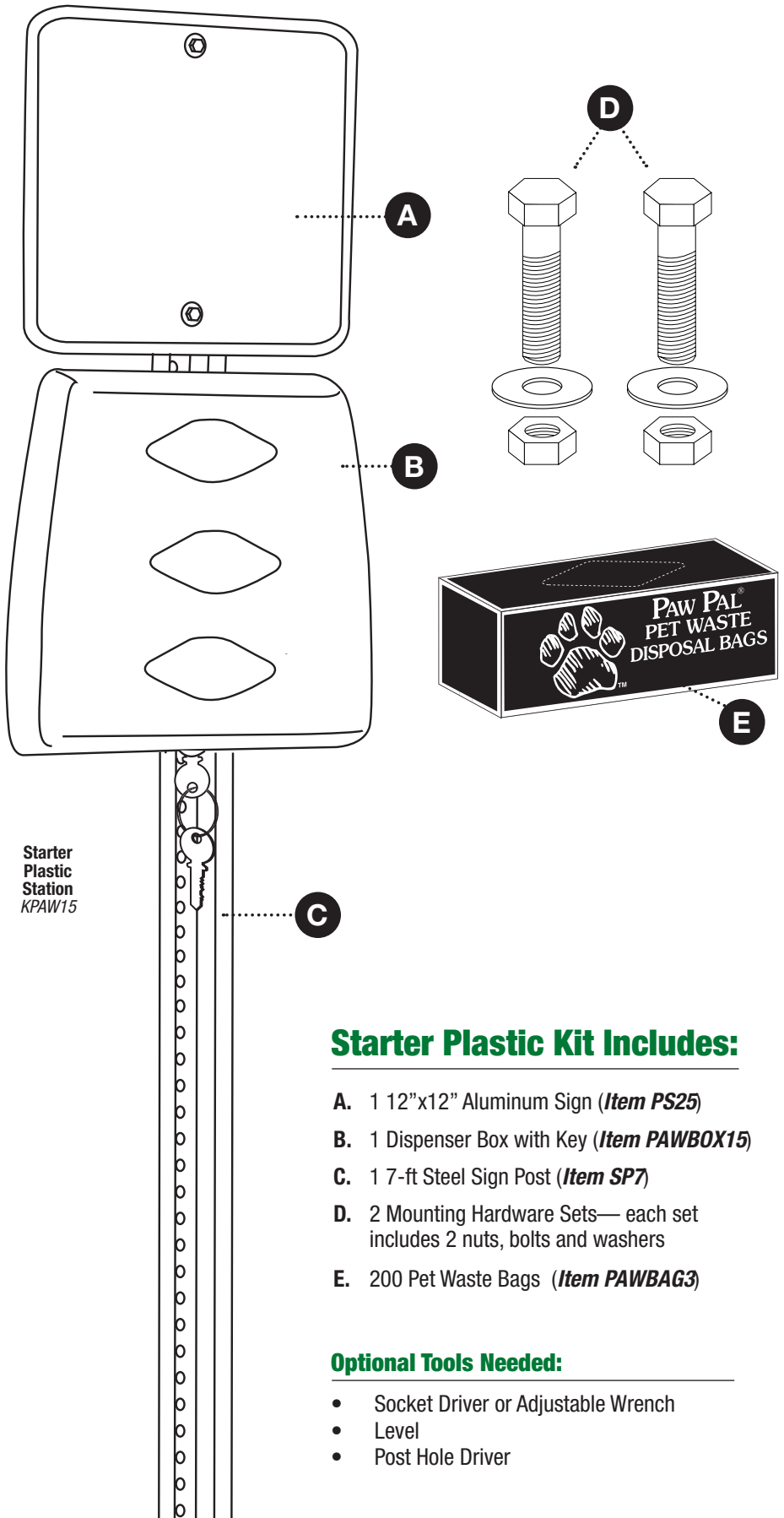
## GREAT AMERICAN'S STARTER PLASTIC PAW PAL® STATIONS:

- ★ 10-year Money-Back Guarantee
- ★ Boxes lock for extra security
- ★ Universal Fit holds any brand of pet waste bags!

## SAVE BIG AND NEVER RUN OUT OF BAGS AGAIN—JOIN OUR VIP REFILL PROGRAM TODAY!

- ★ **Free Shipping** on every refill bag order!
- ★ **Volume Discount Pricing**—lock in prices at your annual quantity!
- ★ **Flexible Delivery**—adjust your order frequency and quantities at any time.
- ★ **No obligations**—this program is designed to save you money, not lock you into commitments. Pause and restart at any time!

**CALL & JOIN TODAY!**



## Starter Plastic Kit Includes:

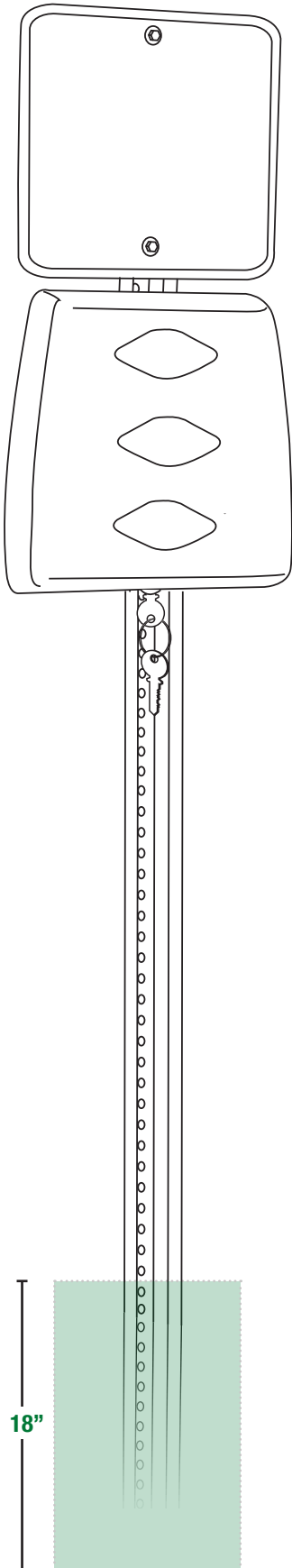
- A. 1 12"x12" Aluminum Sign (*Item PS25*)
- B. 1 Dispenser Box with Key (*Item PAWBOX15*)
- C. 1 7-ft Steel Sign Post (*Item SP7*)
- D. 2 Mounting Hardware Sets—each set includes 2 nuts, bolts and washers
- E. 200 Pet Waste Bags (*Item PAWBAG3*)

## Optional Tools Needed:

- Socket Driver or Adjustable Wrench
- Level
- Post Hole Driver



## 1. Pole Installation



Using a post hole driver (not included), drive the sign post (C) approximately 15-18" into the ground. Make sure that the "hollow" or "recessed" side of the post is facing where you want the front of the unit to face. Use a level (not included) to ensure the pole is standing upright and will properly support the unit. Adjust if necessary.

## 2. Station Assembly

**1.** Using the first hardware set (D), secure the sign (A) to the top of the steel post (C) with a bolt and washer at the top of the sign and another at the bottom. The washers should be next to the printed side (front) of the sign and the nuts are secured on the outside/back of the post. To ensure the best outcome, make sure the sign is flush with the top of the pole.

**2.** Using the second hardware set (D), attach the dispenser box (B) directly under the sign leaving about 1" in-between. Open the box, align the holes to the steel post and attach with the two bolts. The washers should be used on the inside of the box with the nuts secured to the outside/back of the post.

## 3. Station Preparation

Open the dispenser box and insert the included box of bags (E) inside the dispenser. (**Note:** Each dispenser box holds up to 3 boxes of pet waste bags). Close and lock the station, pull the top bag through the hole and you're all set!

**Please contact us immediately if you have any missing or damaged items or need any additional assistance. Thank you.**



**Need Help? Give us a call! Great American • 1-800-231-0329 • [www.gabpproperty.com](http://www.gabpproperty.com)**