



Please contact us at 1-800-231-0329 if you need further assistance or have any questions.

Thank you for your continued business!

Great American Property Management

www.gabpproperty.com



Item: MTC32SLT
32 Gallon Skyline
Trash Can & Accessories



Parts, Hardware, and Suggested Tools

Unit Common Description	Units Per Model
Skyline Trash Receptacle	1
Liner	1
Trash Can Hardware Kit (bolts, nuts, washers, bolt caps)	1
Security Cable	1

All Accessories (below) are sold separately

Unit Common Description	Units Per Model
Inground Mount or Surface Mount	1
Ash Bonnet, Bonnet, or Flat Top Lid	1

Suggested Tools and Additional Materials:

Tools:

- Socket and/or open face wrench
- Drill for surface mount
- Post hole digger for in-ground mount

Materials:

Surface mount: Concrete screws

In-ground mount: 1-2 50lb. bags concrete

Skyline Trash Receptacle



Lids sold separately



Surface Mount



In-ground Mount

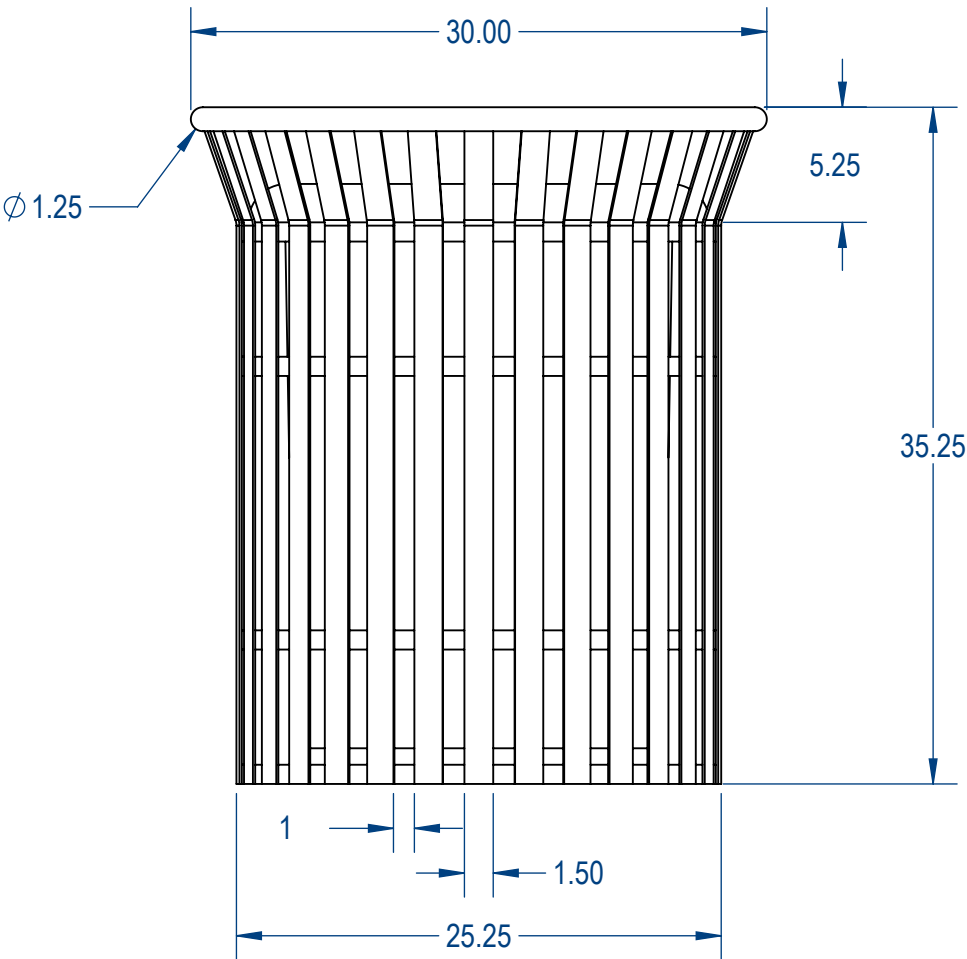
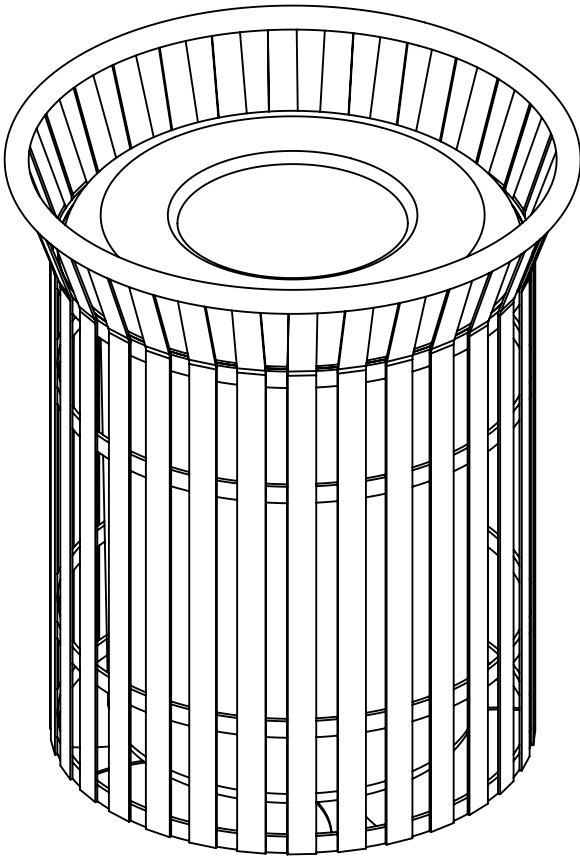


Mounts sold separately

Assembly Instructions

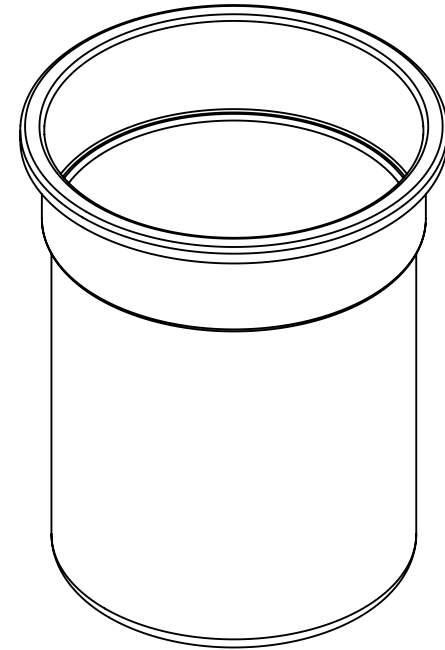
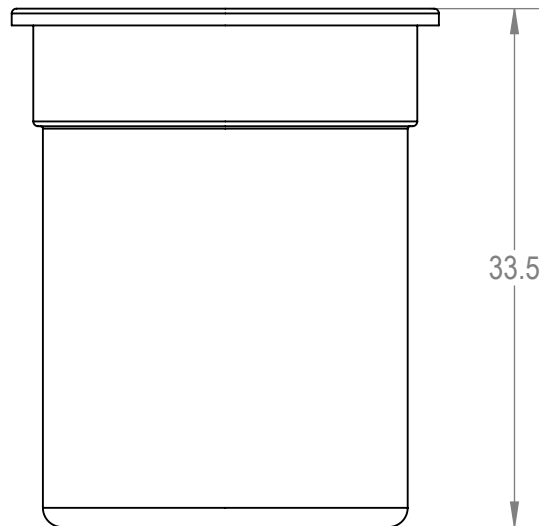
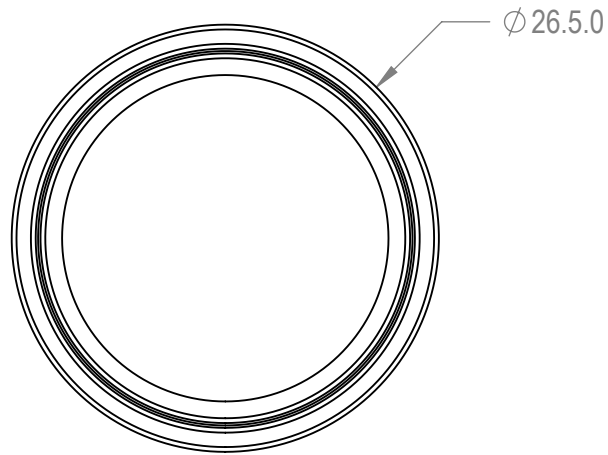
1. Trash can comes fully assembled.
2. *If in-ground mount is ordered:* Once a location is determined, dig a columnar hole approximately 8-10" wide and 18" deep. Prepare concrete according to the package directions and position the mount approximately 14" deep in the concrete. Make sure to leave 3-4" of the mount above ground level. Use a level to make sure that mount is perpendicular to ground. Allow the concrete to set per concrete manufacturer instructions.
3. *If surface mount is ordered:* Once a location is determined, use the holes in the surface mount to mark where holes will need to be drilled in concrete. Drill four holes in position and clean out the holes of debris. Drive concrete screws through the mount into the concrete with an impact wrench to secure mount. (Concrete hardware is not included)
4. Once mount is installed, attach trash can by lining up the bolt hole pattern on the mount to the bolt hole pattern on the bottom of the receptacle and bolt together using hardware kit provided. The washers should be on the inside of the trash can, and the nuts should be on the underside of the trash can.
5. Can liner is one piece. Place liner inside receptacle, the top of the liner will rest on the lip of the trash receptacle.
6. *If top is ordered:* Attach security cable at one end to the top using hardware provided through the pre-drilled bolt hole on the top. Attach the other end of the security cable to the Trash Receptacle using either the expanded metal or punched steel and the hardware provided. Leave enough slack in the cable to be able to remove the lid.

Specification - Image



			TITLE: allon rash eceptacle with lare op		
			SIZE	DWG. NO.	REV
			A	trap Metal	
			WEIGHT:		

Specification - Image



			TITLE:		
			Plastic Liner for 55 Gallon Trash Receptacle		
			Overall Specs		
			SIZE	DWG. NO.	REV
			A	RLN55-P-00-000	
			WEIGHT:		

5

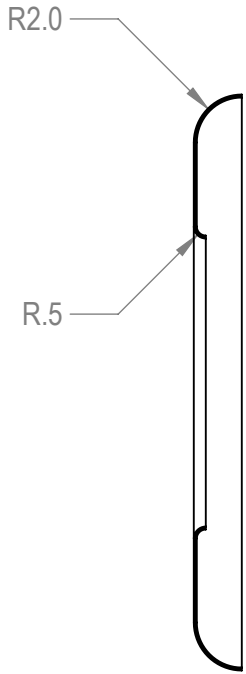
4

3

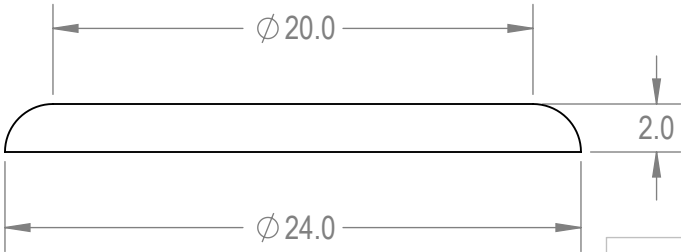
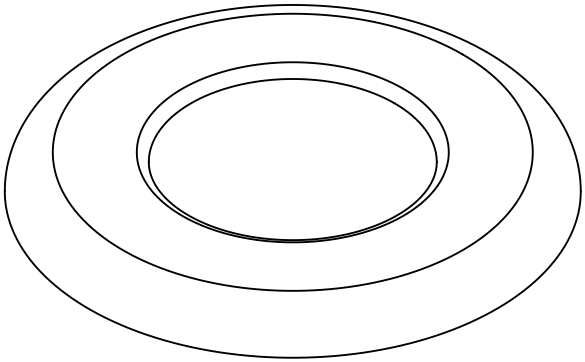
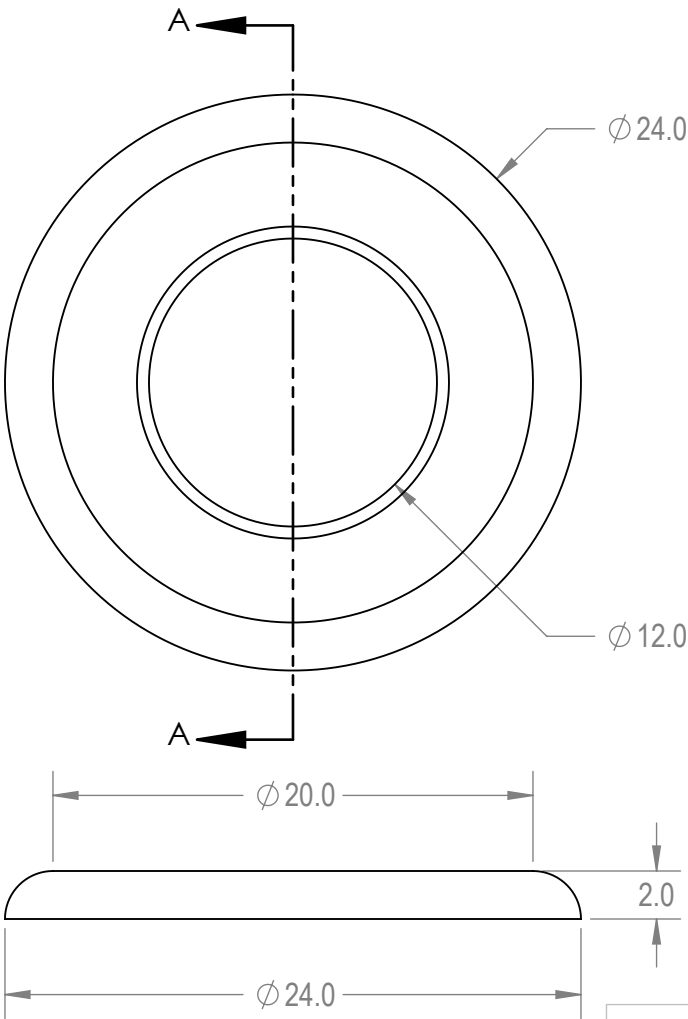
2

1

Specification - Image

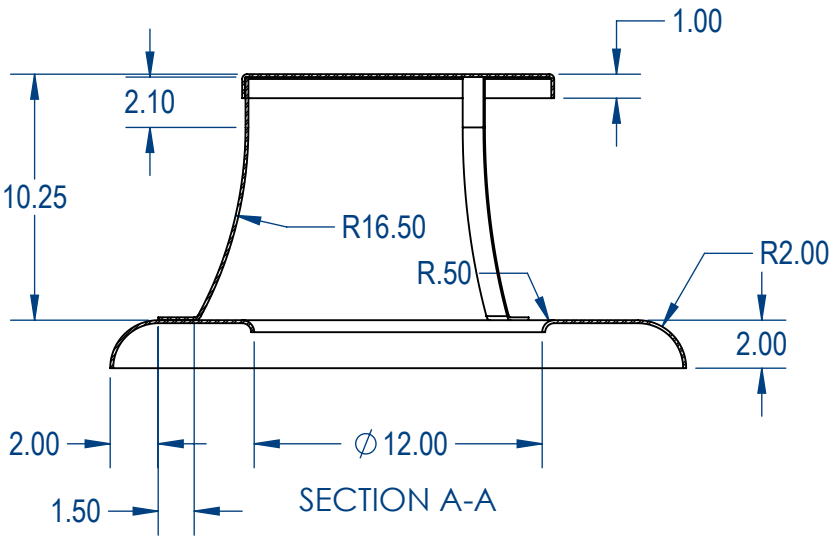
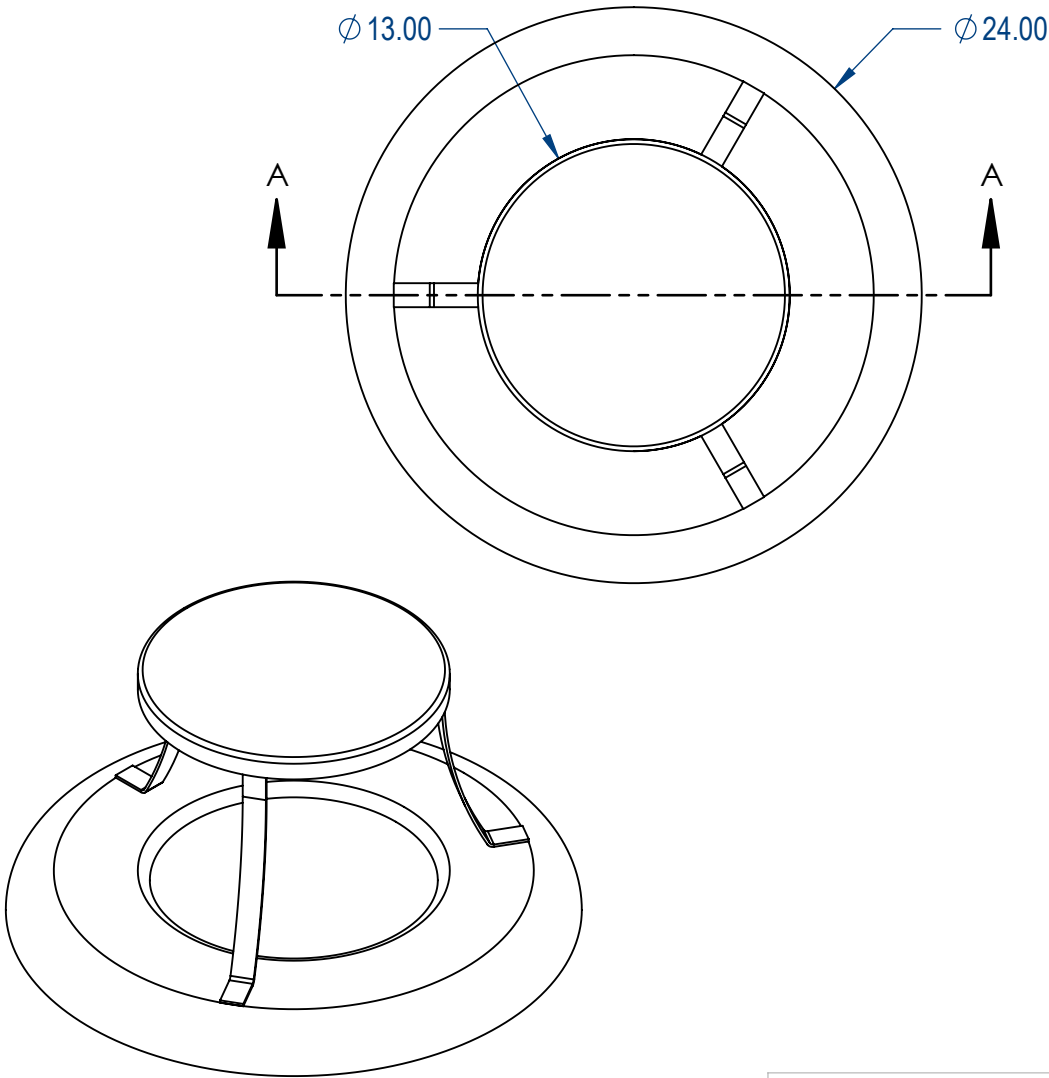


SECTION A-A



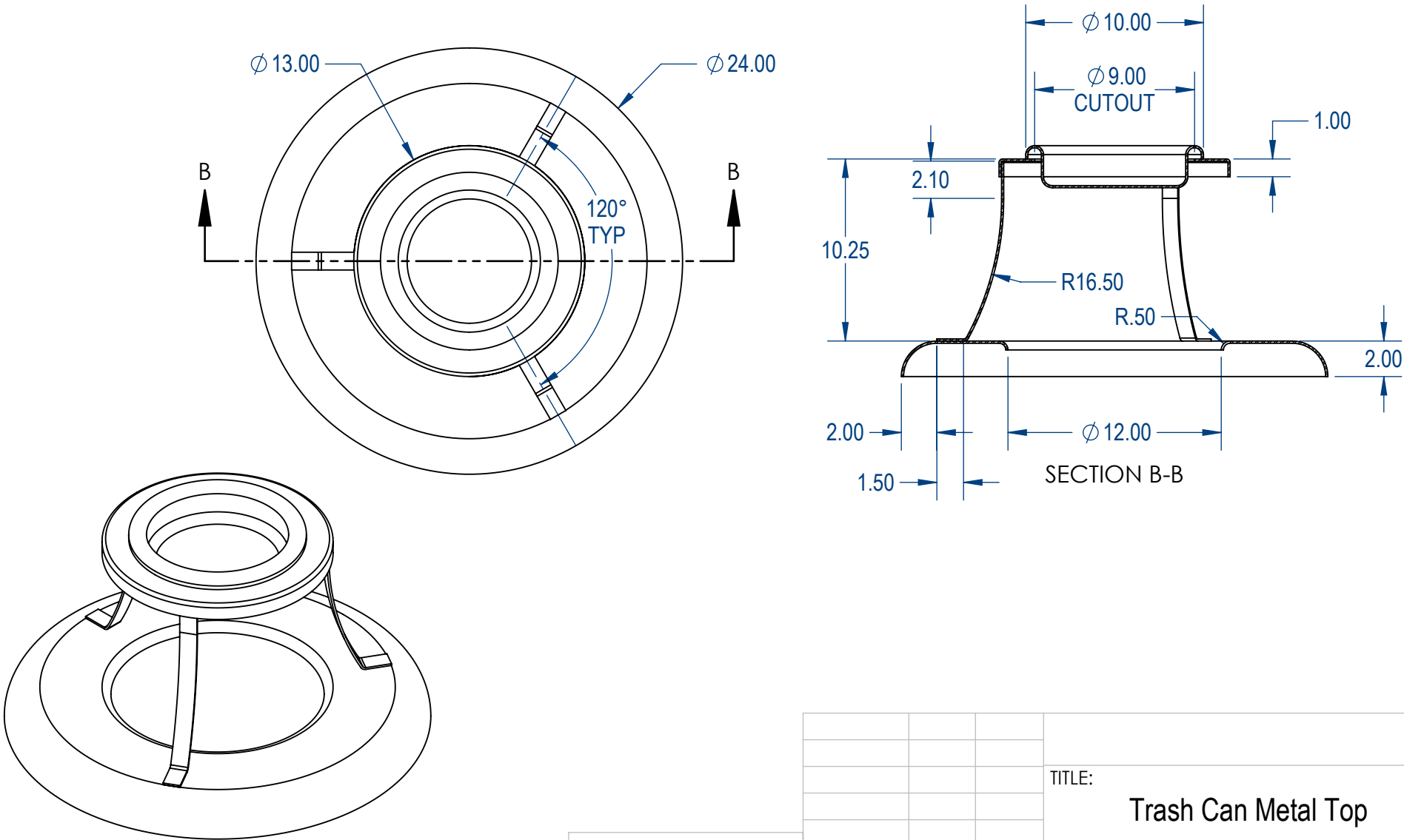
			TITLE: Steel Flat Top - 32 Gallon Trash Receptacle		
			SIZE A	DWG. NO. RFT32-S-00-000	REV
			WEIGHT:		

Specification - Image



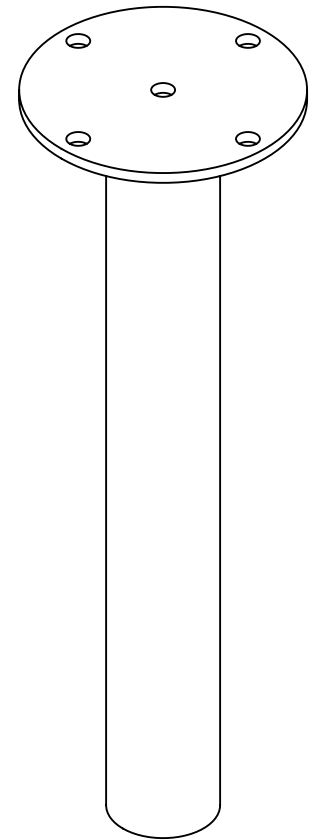
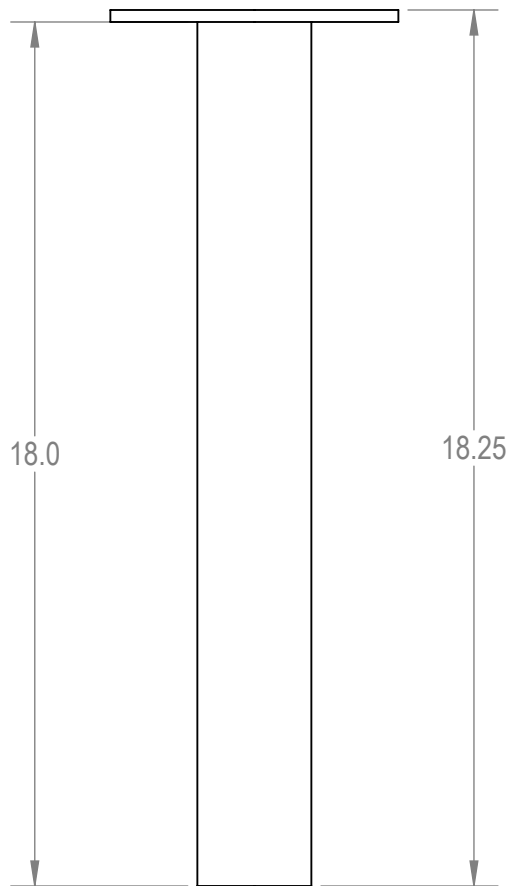
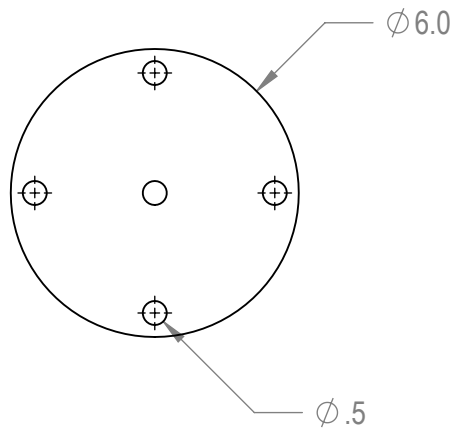
			<div>TITLE:</div> <div>Trash Can Metal Top</div> <div>Bonnet Lid</div>		
			SIZE	DWG. NO.	REV
			A	TCMT-001	
				WEIGHT:	

Specification - Image



			<div>TITLE:</div> <div>Trash Can Metal Top</div> <div>Ash Bonnet Lid</div>		
			SIZE	DWG. NO.	REV
			A	TCMT-002	
				WEIGHT:	

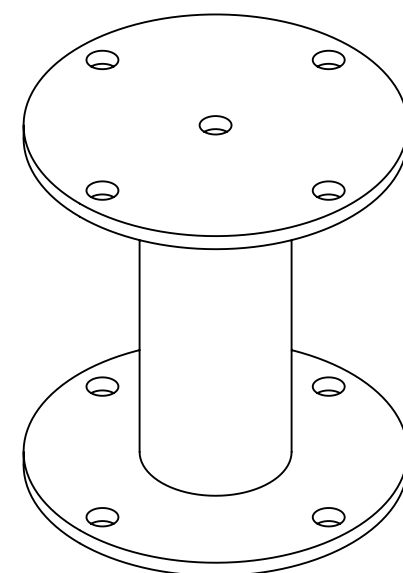
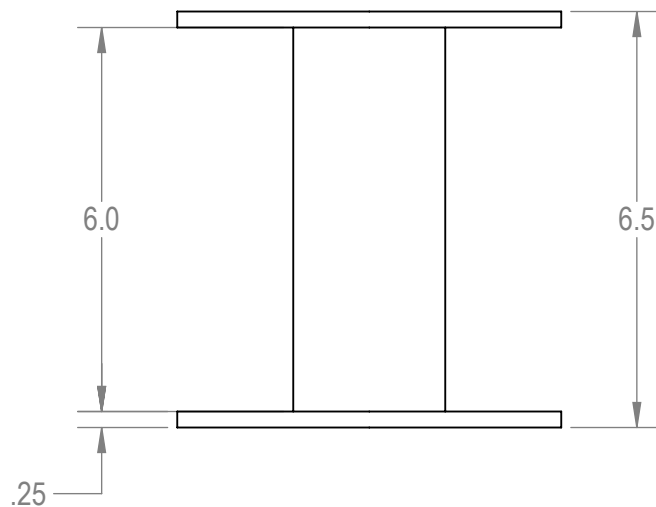
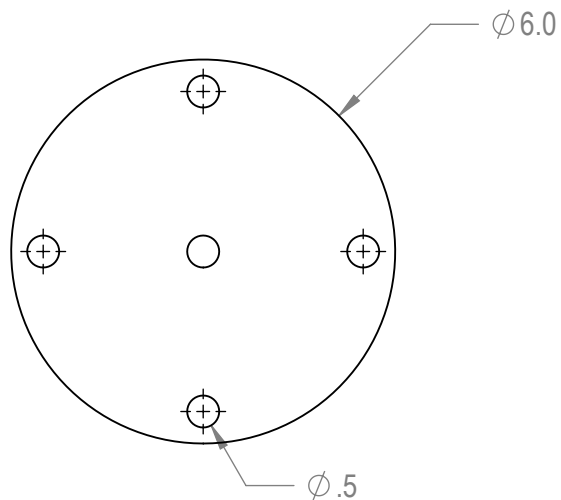
Specification - Image



			TITLE:		
				Trash Can	
				Inground Mount Post	
			SIZE	DWG. NO.	REV
			A	RIM32-S-00-000	
			WEIGHT:		

1

Specification - Image



5 4 3 2 1

			TITLE:		
			Trash Can		
			Surface Mount Post		
			SIZE	DWG. NO.	REV
			A	RSM32-S-00-000	
			WEIGHT:		

Specification - Written

Trash Receptacle Material: Outer frame is made from 3/4" x 2" rolled form angle iron.

- Slatted Steel - Inside material is 11 gauge slatted steel. Bracing is 1-1/2" Solid Steel flat bar. All MIG welded.

Trash Receptacle Coating:

- Advantage Coating - This state-of-the art coating will not chip, crack or peel. It doesn't have any drips or runs, and it the most durable coating on the market. The Advantage coating come with a 7 year Warranty.
- Industry Standard Coating - Premium Polyethylene coating comes with a 5 year warranty.
- Powder Coat Finish - Premium high quality powder coat finish Electrostaticlly Applied with 13 Different Colors to choose from.

Flattop: 14 gauge Solid Formed Steel.

Dome Top - Steel: 14 gauge Formed Steel.

Finish Liner: HD polyethylene plastic

In ground Mount: 2-3/8" Tubing with 11 gauge mounting bracket - powder coat finish.

Surface Mount: 2-3/8" Tubing with 11 gauge mounting brackets - powder coat finish.

Hardware: All hardware is Xylan coating black hardware for extra protection and strength

Dimension: 32 Gallon Trash Receptacle Overall Dimension: 30" H, 22" Diameter

Installation Safety:

- Please follow installation instructions from the manufacturer. It is recommended that the product is installed by an experienced installer.
- Please inspect the product at the time of delivery, do not install damaged or defective parts or products.
- All hardware for proper assembly (not installation) of the trash can unit is provided. Hardware for the surface mount installation is not included.

Product Maintenance:

- Maintenance inspections should be performed at least once a year.
- Cleaning, when necessary can be performed with warm water and most house hold cleaners. Avoid any harsh chemicals such as paint remover and acetone.
- Any surface rust that may occur should be removed and repainted. Contact manufacturer for touch up paint or other recommended paints. Contact manufacturer for instructions on removing vandalism such as spray paint.
- Bolts and nuts should be checked on a regular basis to maintain proper tightness.